

MONTHLY MEMBERSHIP PROGRESS REPORT

LOCATION WISCONSIN

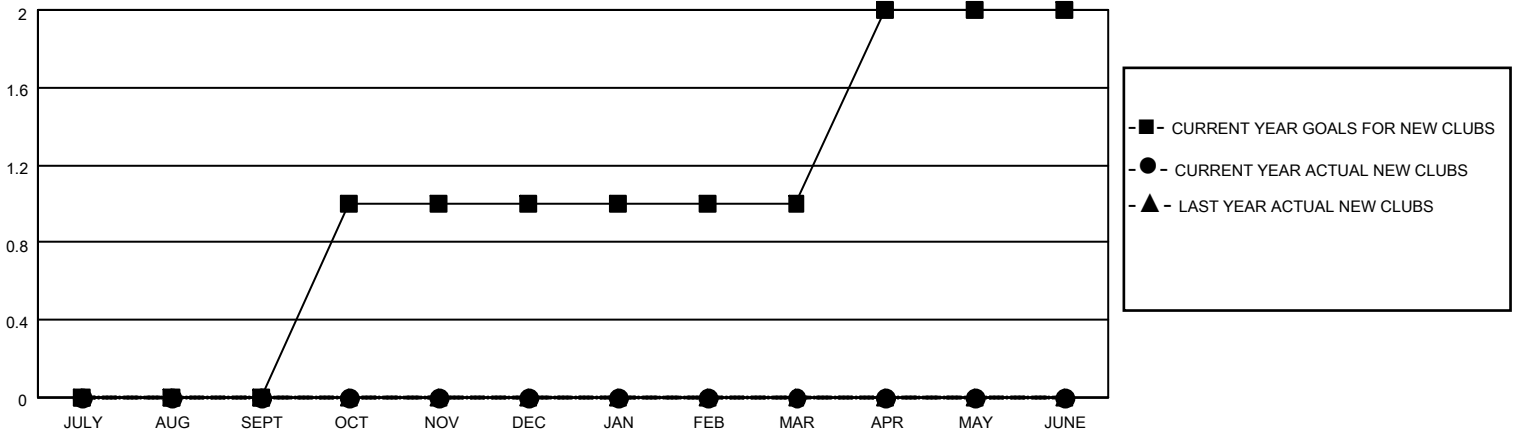
District 27 B1

Results as of: 9/30/2022

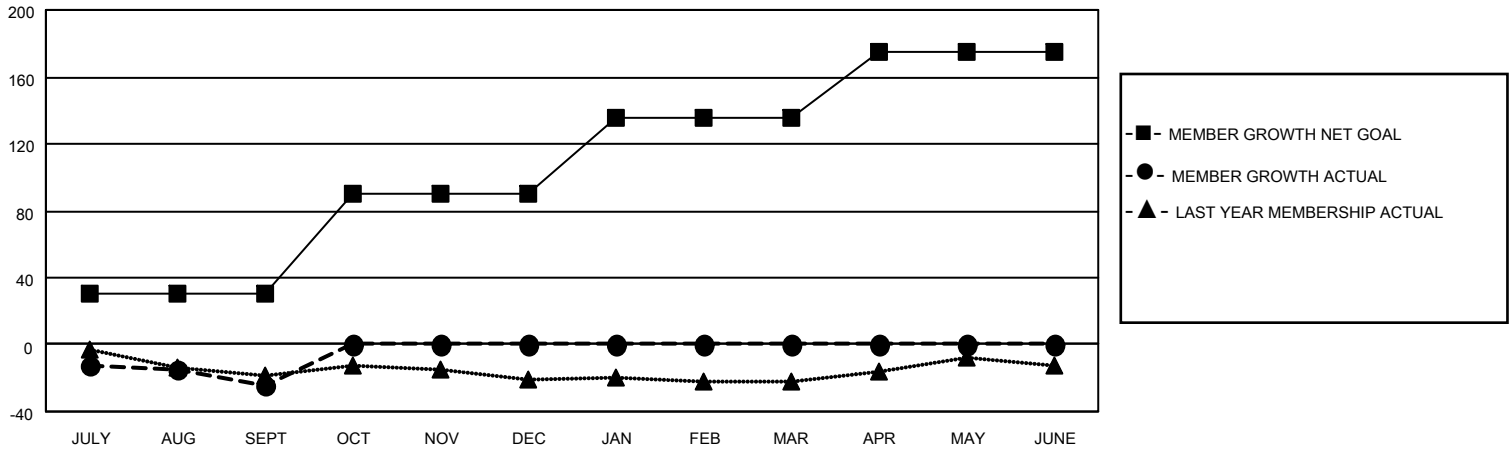
Clubs			
RESULTS FOR 2022-2023			
QUARTER	NEW CLUB GOAL	NEW CLUBS	DROPPED CLUBS
JULY/AUG/SEPT	0	0	0
OCT/NOV/DEC	1	0	0
JAN/FEB/MAR	0	0	0
APR/MAY/JUNE	1	0	0

Members			
RESULTS FOR 2022-2023			
QUARTER	MEMBER GROWTH NET GOAL	MEMBER GROWTH ACTUAL	DROPPED MEMBERS ACTUAL (including transfers)
JULY/AUG/SEPT	30	28	49
OCT/NOV/DEC	60	0	0
JAN/FEB/MAR	45	0	0
APR/MAY/JUNE	40	0	0

GOALS AND ACTUAL NEW CLUBS CUMULATIVE



GOALS AND ACTUAL MEMBERS CUMULATIVE



DROPPED CLUBS: 0

15 CLUBS OF 63 ADDED 1 OR MORE NEW MEMBERS

GENDER DISTRIBUTION

MALE	1,339 (73.45%)
FEMALE	484 (26.55%)
NON BINARY	0 (0.00%)
PREFER NOT TO ANSWER	0 (0.00%)

DROPPED MEMBERS

[CLICK HERE FOR CUMULATIVE MEMBERSHIP DATA](#)

DECEASED	8
CLUB CANCELLED	0
OTHER	41
TOTAL	49

TOTAL FAMILY UNIT MEMBERS 346

FAMILY MEMBERS PAYING HALF DUES 175